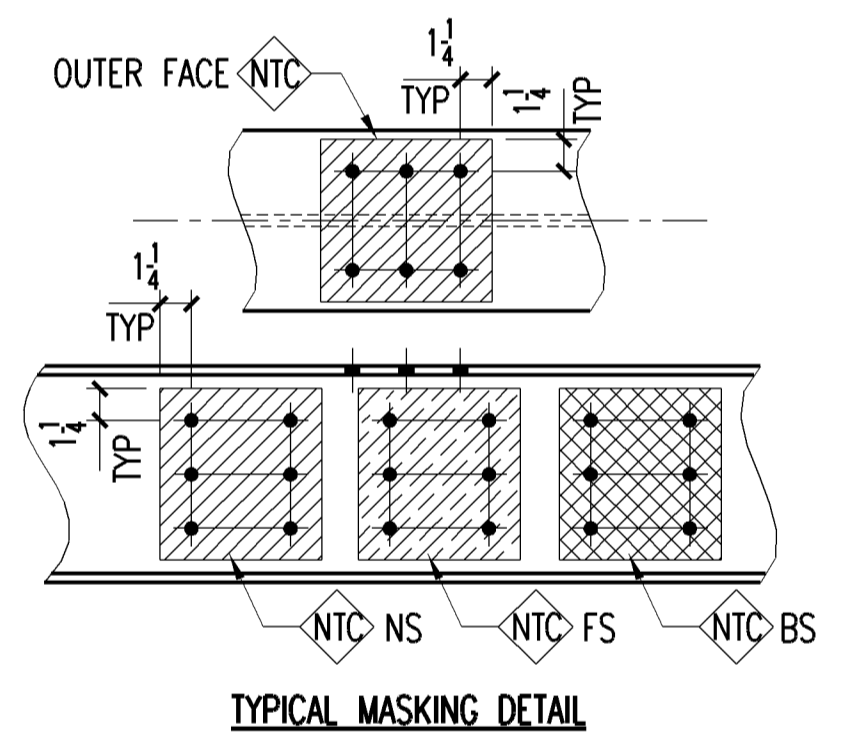
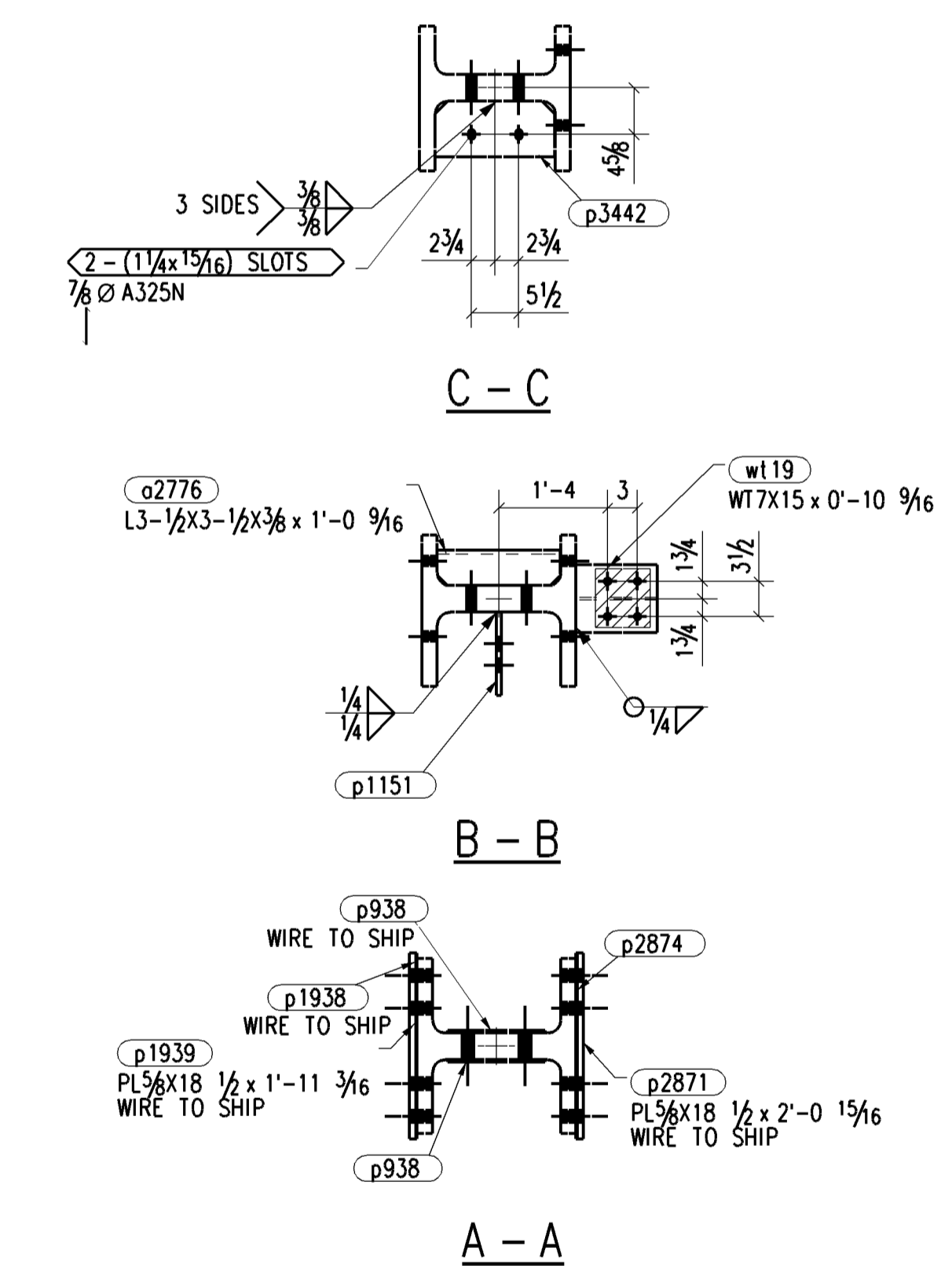


BILL OF MATERIAL

ARM	MARK	QTY	SHAPE	LENGTH	STEEL	REMARKS	COST	WEIGHT
PG-LN	TOTAL				GRADE	CODE		TOTAL
B16105C1		1	COLUMN			B.O.P	1.124	
w1375		1	W14X605	44'-6"	A913-GR.65			26956.7
a2776		1	L3-1/2X3-1/2X3/8	1'-0 9/16"	A36			8.8
p938		4	FL1/8"X9 1/2"	1'-2 7/16"	A572-GR.50	WIRE TO SHIP		19.4
p1151		1	PL1/2"X6 5/16"	1'-0 5/8"	A36			7.4
p1938		1	FL1/8"X18 1/2"	1'-11 3/16"	A572-GR.50	WIRE TO SHIP		15.2
p1938		1	PL5/8"X18 1/2"	1'-11 3/16"	A572-GR.50	WIRE TO SHIP		76.0
p2862		2	PL1 1/2"X9 1/2"	2'-5"	A572-GR.50			234.4
p2871		1	PL5/8"X18 1/2"	2'-0 15/16"	A572-GR.50	WIRE TO SHIP		81.8
p2874		1	PL1/8"X18 1/2"	2'-0 15/16"	A572-GR.50	WIRE TO SHIP		16.4
p2892		2	PL1 3/4"X17 1/2"	3'-7"	A572-GR.50			746.9
p3442		1	FL3/4"X6"	1'-0 9/16"	A36			15.7
wt19		2	WT7X15	0'-10 9/16"	A992			26.4
TOTAL WEIGHT								28205

TOTAL QTY	MARK	SHOP BOLTS	LENGTH	TOTAL QTY	MARK	FIELD BOLTS	LENGTH
48	B16105C1	1 1/8" DIA A490SC BOLT	7 3/4"	4	B16105C1	7/8" DIA A325SC BOLT	2 1/4"
8	B16105C1	1 1/8" DIA A490SC BOLT	8"	48	B16105C1	1 1/8" DIA A490SC BOLT	7 3/4"
				8	B16105C1	1 1/8" DIA A490SC BOLT	8"

ALL A325SC & A490SC SHOP & FIELD BOLTS SHALL BE A325SC-X AND A490SC-X RESPECTIVELY



NO MASKING REQUIRED AT FAYING SURFACE AS THE PRIMER MEETS CLASS B FINISH

REVISION AND DISTRIBUTION BOX						
REV	DATE	DESCRIPTION	BY	TO APPL	TO SHOP	TO FIELD

DRAWINGS ARE SUBMITTED FOR APPROVAL IN ACCORDANCE WITH AISC MANUAL NINTH EDITION - PAGE 5-229 PARAGRAPH 4.2 AND PAGE 5-290 SECTION 4.

SHOP NOTES:

- 1) ALL RUNNING DIMENSIONS ARE TAKEN FROM THE \ominus LINE
- 2) ALL GAS RE-ENTRANT CUTS WILL HAVE A RADIUS OF 1/2" UNLESS NOTED
- 3) ALL SHOP BOLTS SHALL BE SNIUG TIGHT UNLESS NOTED

MATERIAL: ASTM A36 UNLESS NOTED

WELD: E70XX - LH ELECTRODES

OPEN HOLES: PREP: COMMERCIAL BLAST CLEAN IN ACCORDANCE WITH SSPC-SP6

PAINT: PRIME: ONE COAT INORGANIC ZINC
FINISH: COLOR C

BOLTS: 7/8" DIA A325SC-X CLASS B (UNLESS NOTED)

DWG DESCRIPTION:

Farbee Structures Private Limited
www.farbee.com

CUSTOMER: JOB NO. EXTRA NO.

JOB TITLE: DWG. NO. REV. NO.

JOB LOCATION: B16105C

DWG. BY: DATE: CHK. BY: DATE: